

Engineering
GREAT Solutions

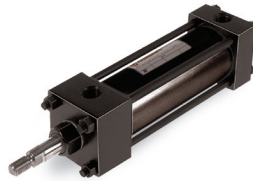
Product Line Guides for Industrial Automation

www.imi-precision.com/us

1.800.514.0129



A and EA Series
Aluminum NFPA
1-1/2" - 12" Bores
Single and Double Acting



J and EJ Series
Steel NFPA
1-1/2" - 12" Bores
Single and Double Acting



NEN Series
Aluminum NFPA
1-1/2" - 4" Bores
Double Acting, Bolt on Mountings



SS Series
Stainless Steel NFPA
1-1/8" - 8" Bores
Double Acting



N Series
Non-Rotating NFPA
1-1/8" - 4" Bores
Double Acting



LS Series Thrusters
Linear Thruster with NFPA cylinder
1-1/2" - 2" Bores
Composite and Roller Bearings



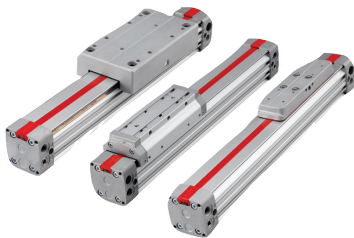
TA Series Tiny Tim
Small Bore NFPA
3/4", 1", 1-1/8" Bores
Single and Double Acting



T Series Tiny Tim
Small bore Non-NFPA
3/4" & 1-1/8" Bores
Single and Double Acting



ISOLine™
ISO 15552
32mm - 320mm Bores
Double Acting
Exposed Tie Rods or Profile Tube



C/146000 Lintra Plus
Rodless Cylinder
16mm - 80mm Bores
Internal, External, Roller Carriage



Series 90000
Extruded Body Compact
12mm - 100mm Bores
Single & Double Acting



PRA/882000, PRA/862000
IVAC Cleanline PRA/882000
IVAC Industrial PRA/862000
32mm-100mm bores
Double Acting, cylinder/valve


F-Series Plus

Round, Compact cylinder
9/16" - 4" Bores
Single and Double Acting


FPT Series

F-Plus Twin Rod, Non-Rotating
3/4" - 2" Bores
Double Acting


RPD Series Delrin

Delrin End Cap Roundline
9/16" - 2" Bores
Double Acting


RT Series Thrusters

Roundline Linear Thruster
9/16" - 3" Bores
Composite and Roller Bearings


RP Series Roundline Plus

Round Body Disposable
5/16" - 3" Bores
Single and Double Acting


Rotary Actuators

Rack & Pinion Rotary
1/2" - 2-1/2" Bores
Single and Double Rack,
Multi-Position


Unit-Air Assembly

Description:
Cylinder/Valve combination unit
Typical Applications:
Sorting systems, conveyors, diverters, various industrial applications


Baghouse Cylinder

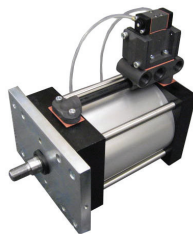
Steel or Aluminum NFPA cylinder with externally mounted valve and electrical junction box, among other optional components. Customized for baghouse filtration systems in power generation plants.


Additional Baghouse cylinder applications

The Baghouse cylinder is ideal for industrial applications requiring system control in a single, comprehensive package. The use of an NFPA cylinder assures mounting flexibility in any industrial setting.


Reciprocating Air Motors

Description:
Cylinder/valve combination with stroke signal valves serving as external pilots
Typical Applications:
Pumping media such as: lubrication, fiberglass, foams, resins, hot melt glue, liquid polymers, waste gases & liquids.




V5x

Inline Solenoid & Air Pilot
 Port: 1/8", 1/4", 3/8" & 1/2"
 Function: 3/2, 5/2 & 5/3
 Cv: 0.48 to 2.48

Voltage: 12 VDC, 24 VDC, 110/120 VAC, 220 VAC


V6x

Inline Solenoid & Air Pilot
 Port: 1/8", 1/4" & 3/8"
 Function: 3/2, 2x3/2, 5/2 & 5/3
 Cv: 0.75 to 2.6

Voltage: 12 VDC, 24 VDC, 110/120 VAC, 220 VAC


Nugget 200

Inline Solenoid & Air Pilot
 Port: 1/4", 3/8" & 1/2"
 Function: 3/2, 5/2 & 5/3
 Cv: 1.67

Voltage: 12Vdc, 24Vdc, 110/120Vac, 220Vac


Nugget 500

Inline Solenoid & Air Pilot
 Port: 1/2" & 3/4"
 Function: 5/2 & 5/3
 Cv: 4.0 to 5.6

Voltage: 12Vdc, 24Vdc, 110/120Vac, 220Vac


Poppet

Inline & Subbase, Solenoid & Air Pilot
 Port: 1/4", 3/8", 1/2", 3/4", 1", 1-1/4", 1-1/2"
 & 2"

Function: 2/2, 3/2 & 4/2

Cv: 1.2 to 49.5

Voltage: 12Vdc, 24Vdc, 110/120Vac, 220Vac


Nugget 200

Inline Manual & Mechanical
 Port: 1/4", 3/8" & 1/2"
 Function: 3/2, 5/2 & 5/3
 Cv = 1.67


VHLA

Inline Manual & Mechanical
 Port: 1/4", 3/8" to 1/2"
 Function: 4/2 & 4/3
 Cv: 0.4 to 3.1


Super X

Inline Manual & Mechanical
 Port: 1/8" & 1/4"
 Function: 3/2, 5/2 & 5/3
 Cv: 0.34 to 0.98


C00

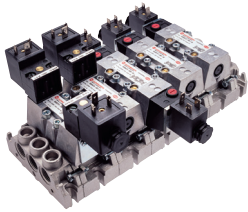
Inline Lockout
 Port: 1/4", 3/8", 1/2", 3/4", 1", 1-1/4" & 1-1/2"
 Function: 3/2
 Cv: 4.2 to 22.4

Common Applications

Molding
Paint Spraying
Pilot control
Position control
Pressure Selection
Tube bending

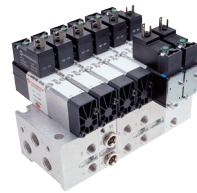
Baggers
Case Erectors
Conveying
Packaging Equipment
Palletizers
Sealers
Stacking

Door Systems
Gate Cotrols
Safety systems
Shut controls
Sorting
Test Equipment
Weighing systems


ISO Solenoid

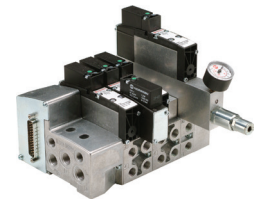
Subbase Manifold
 Port: 1/4", 3/8" & 1/2"
 Function: 5/2 & 5/3
 Cv: 1.2 to 4.4

Voltage: 12Vdc, 24Vdc, 110/120Vac, 220Vac


Mini ISO

Subbase Manifold
 Port: 1/8", 1/4" & PIF (1/4" & 3/8")
 Function: 2x3/2, 5/2 & 5/3
 Cv: 0.58 to 1.22

Voltage: 12Vdc, 24Vdc, 110/120Vac, 220Vac


VS18, 26 & 45

Manifold Mounted
 Port: 1/8", 3/8", 1/2" 1/4" PIF & 3/8" PIF
 Function: 2x3/2, 5/2 & 5/3
 Cv: 0.56 to 4.2

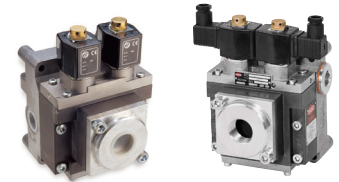
Voltage: Wireway (12Vdc, 24Vdc, 110/120Vac)


VM10 & 15

Stacking
 Port: PIF(1/8", 1/4", 5/32", 5/16", 3/8")
 Function: 2x3/2, 5/2 & 5/3
 Cv: 0.44 to 1.00
 Voltage: Wireway (12Vdc & 24VDC)


VP10, 12, 50, 50S & 51

Inline or Manifold
 Port: 1/8" or 1/4"
 Function: 3/2 Proportional
 Flow: 6 to 60 SCFM or Cv = 0.2 to 1.4
 Control: 0 - 10V or 4 to 20 mA / Open or closed loop
 Outlet Pressure Control: 0 to 145 PSI


Press Safety

Inline
 Port: 1/4", 1/2", 3/4", 1" & 1-1/2"
 Function: 3/2 with Dynamic monitoring
 Flow: Cv 2.6 to 62.4
 12Vdc, 24Vdc, 110/120Vac, 220Vac
 Voltage: 24Vdc & 110/120Vac


Energy

Inline or Manifold
 Port: 1/8" upto 1-1/2"
 Function: 3/2, 5/2, 5/3
 Materials: Stainless Steel, Brass and AL
 Certifications: CSA, FM, UL, SIL and Tuv
 Chemical, Refining, Power Plants, Oil & Gas


Commercial Vehicle

Inline or Manifold
 Port: 1/8, 1/4" & 1/2"
 Function: 3/2, 5/2, 5/3
 Materials: Composite, Stainless Steel, Brass and AL
 Control: Air, Electrical or Manual/Mechanical
 Chassis Cab, Bus & Trailer


Switches and Sensors

Inline
 Port: 1/4" or 7/16-20 UNF
 Medium: Vacuum, Air and Hydraulic
 Output Signal: 1 x PNP or 2 x PNP
 Repeatability: 3%

Common Applications

Paint Spraying
 Pilot control
 Position control
 Printing & Ink Jet
 Remote Operation
 Tensioning & Winding Systems
 Tube bending

Door Systems
 Gate Controls
 Leak testing
 Safety systems
 Shut controls
 Sorting
 Weighing systems

Case Erectors
 Conveying
 Packaging Equipment
 Palletizers
 Pressure Control
 Stacking Systems
 Welding control

Excelon Series

Excelon F72, F73, F74 Series

General purpose filters, oil removal, oil vapor, and filter/regulators 1/4" to 3/4", 250 psig* -30° to 175°F

Excelon R72G, R73G, R74G

1/4" to 3/4" 300 psig -30°F to 175°F

Excelon L72M/C, L73M/C, L74M/C

1/4" to 1/2" 250 psig* -30°F to 175°F*

Excelon V72G, V74G

1/4" to 3/4" 300 psig -30°F to 175°F*

Excelon B72G, B73G, B74G,

Filter/Regulator 1/4" to 3/4" 250 psig* 0°F to 150°F*

Excelon P72, P74, P74, and T72, T73, and T74

Smooth start/exhaust Smooth Start/exhaust 1/4" to 3/4", 150 psig 0°F to 175°F*

Excelon Combination Units

Filter/Regulator-Lubricator boxed sets

1/4" to 1/2" 250 psig* 0°F to 150°F*


C72A, C73A, C74A

Filter-Regulator-Lubricator 1/4" to 3/4" 250 psig -30°F to 175°F*

Inch and Metric Fittings and Accessories


A full line of inch, and metric fittings accessories and tubing.

Olympian Plus Modular System

F64, F68, Series

General purpose filters, oil removal, oil vapor, and filter/regulators 1/4" to 1-1/2", 250 psig* -30° to 175°F

R64G/R, R68G

General purpose 1/2" to 1-1/2" 250 psig* -30°F to 175°F*

L64M/C, L68M/C

1/2" to 1-1/2" 250 psig* -30°F to 175°F*

B68E/G

Filter/Regulator 1/2" to 1-1/2" 250 psig* -30°F to 175°F*

V64H, V68H

1/2" to 1-1/2" 300 psig* -30°F to 175°F*

P64, P68, and T64, and T68

Smooth start/ exhaust, & Lockout 1/2" to 1-1/2" 250 psig, 0°F to 175°F*

Miniature Series

Series PTH

Filter/Regulator-lubricator 1/8" - 1/4" 250 psig* 0°F to 150°F*

F07

General purpose filter 1/8", 1/4" 250 psig* -30°F to 175°F*

F39

Oil removal filter 1/8", 1/4" 250 psig* -30°F to 150°F*

R07, R46

General purpose regulator 1/8", 1/4" 300 psig* -30°F to 150°F*

B07, B39

Filter/Regulators 1/8", 1/4" 250 psig* -30°F to 150°F*

L07

Micro-fog lubricator 1/8", 1/4" 250 psig* 0°F to 175°F*

Ported Inline F, R, L's

F17 and F18

General purpose filter
3/4" to 1-1/2"
250 psig
-30°F to 175°F

F46 and F47

Oil removal filter
3/4", 1", 1-1/4"
250 psig
-30°F to 150°F

L17 Lubricator

3/4" to 1-1/2"
250 psig
0°F to 175°F

P8A Filter-Regulator-Lubricator

1", 250 psig
0°F to 175°F

R17, R18

General purpose regulator
3/4" to 2"
450 psig, 300 psig (R17)
-30°F to 175°F*

Pressure, Micro-Trol, Instrument regulators, Pilot and Feedback Regulators

11-002 & 20AG

Pressure regulator
1/4", 3/8", 1/2"
G3/4, G1
400 psig
-30°F to 175°F

R24

Micro-Trol
pressure regulator
1/4" to 1-1/4"
300 psig
0°F to 150°F

**R38 Instrument,
B38 filter/reg., and
11-018 precision
regulator**

1/4"
290 psig -40°F to 175°F

**R40, R41, 11-400,
11-104**

Pilot Feedback, feedback
1/4"
360 to 400 psig
0°F to 175°F

**11-042, 11-008,
R18, R24**

Pilot operated regulator
1/4" to 2"
30 to 400 psig
0°F to 175°F

Stainless Steel Products

**Maxseal IFR3 &
IFR4**

Filter/regulator
1/4" and 1/2"
290 psig
-22°F to 194°F

B38

General purpose filter/
regulator
1/4", 1/2" PTF
450 psig*
-40°F to 175°F

F22, R22, L22

Filter, pressure regulator,
lubricator
1/2" NPTF
290 psig*
0°F to 175°F

F05 General purpose Filter

1/4" PTF
300 psig
-13°F to 175°F

**R05, B05 General
purpose
regulator & filter/regulator**

1/4" PTF
300 psig
-30°F to 150°F

Water and Air Regulators

R06

Brass miniature
1/8", 1/4"
400 psig
-30°F to 150°F*

R14, R16

Miniature, preset,
nonadjustable
1/8", 1/4"
400 psig
-30°F to 150°F

11 044

Pressure regulator
1/4" tube connecton
250 psig
-30°F to 150°F*

R91

Pressure regulator
1/4"
150 psig
0°F to 125°F*

R43, 11-009

Water regulator
1/4" to 1"
400 psig
-30°F to 200°F*

FITTINGS



Pneufit Push-in
Inch
1/8" to 1/2" O/D tube



Pneufit C Composite, and Pneufit M
Inch
1/8" to 1/2" O/D tube



Pneufit D
Inch
5/32" to 1/2" O/D tube



Pneufit Push-in
Metric
4 to 14 mm O/D tube



Pneufit C Composite, and Pneufit M
Metric
3 to 16 mm O/D tube



Pneufit D
Metric
4 to 12 mm O/D tube

FUNCTION FITTINGS AND FLOW CONTROLS



Pneufit Push-in
elbow banjo
1/8" to 1/2", 4 to 12 mm



Flow Controls
5/32" to 1/2", 4 to 16 mm



T1000 Series Block form controls
1/8" to 1/2" NPT or ISO G



Pneufit C Inline
5/32" to 1/2", 4 to 12 mm



M/800, C/800 Series
Heavy duty
1/8" to 1"



T51, T52, T53 Series
Non-return
5/32" to 1/2", 4 to 12 mm

FUNCTION FITTINGS AND FLOW CONTROLS (cont)

Air fuses

In-line excess flow shut-off valves
1/4" to 1-1/2"


C20G Series

Non-return valves
5/32" to 1/2", M5, 1/8" to 1/2"


T65 Series Shuttle valves

1/8", 1/4", NPT and ISO G


T70, C511 Series

Quick exhaust valves
1/8" to 3/4"


T15 Series

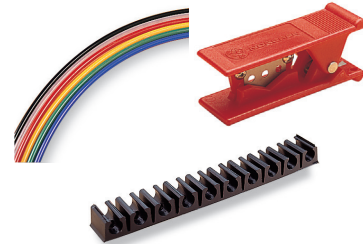
Inline, push-in Flow controls
1/8" to 1/2", 3 to 12 mm


Pressure Sensor fitting

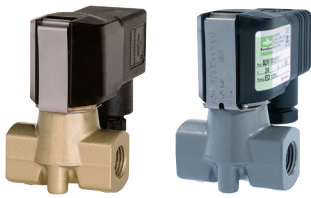
5/32", 4 mm

FLEETFIT VEHICLE FITTINGS


FleetFit push-in fittings
inch and metric

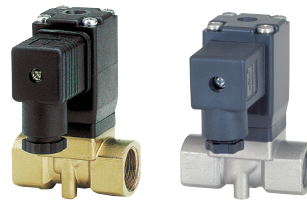
TUBING AND ACCESSORIES


Tubing, cutters, mounts, markers



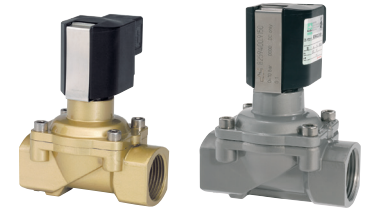
**Buschjost
Series 82520 & 84620**

Port: 1/8", 1/4", 3/8"
 Pressure: 0 - 580 PSI
 Cv = 0.08 up to 0.58
 Seat Materials: NBR
 Materials: Brass & 316SS



**Buschjost
Series 82630 & 82570**

Port: 1/4", 3/8" & 1/2"
 Pressure: 0 - 145 PSI
 Cv = 1.7 to 2
 Seat Materials: NBR
 Materials: Brass & 316SS



**Buschjost
Series 82640 & 84490**

Port: 1/4", 3/8", 1/2", 3/4", 1", 1-1/4", 1 1/2" & 2"
 Pressure: 0 - 232 PSI
 Cv = 2.2 to 47.2
 Seat Materials: NBR & NBR-K
 Materials: Brass & 316SS



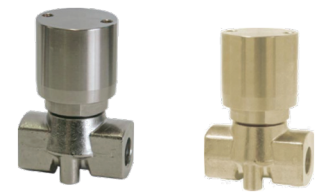
**Buschjost
Series 82410 & 82740**

Port: 1/4", 3/8", 1/2", 3/4", 1", 1-1/4", 1 1/2" & 2"
 Pressure: 0 - 232 PSI
 Cv = 2.2 to 47.2
 Seat Materials: NBR & HBNR
 Materials: Brass & 316SS



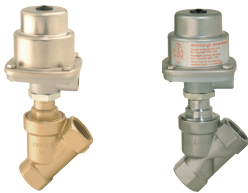
**Buschjost
Series 85710 & 85750**

Port: 1/4", 3/8", 1/2", 3/4", 1", 1-1/4", 1 1/2" & 2"
 Pressure: 0 - 580 PSI
 Cv = 2.5 to 49.5
 Seat Materials: NBR-K
 Materials: Brass & 316SS



**Buschjost
Series 84380 & 84390**

Port: 1/8", 1/4", 3/8"
 Pressure: 0 - 363 PSI
 Cv = 0.14 to 2
 Seat Materials: PTFE
 Materials: Brass & 316SS



**Buschjost
Series 82190, 82290, 82390 & 82490**

Port: 1/8", 1/4", 3/8" & 1/2"
 Pressure: 0 - 232 PSI
 Cv = 5.5 to 61
 Seat Materials: NBR
 Materials: Brass & 316SS



**Buschjost
Series 84510 & 84530**

Port: 1/2", 3/4", 1", 1-1/4", 1 1/2" & 2"
 Pressure: 0 - 290 PSI
 Cv = 5.5 to 42.6
 Seat Materials: PTFE
 Materials: Brass & 316SS



**Buschjost
Series 84730 & 84750**

Port: 1/2", 3/4", 1", 1-1/4", 1 1/2" & 2"
 Pressure: 0 - 232 PSI
 Cv = 5.5 to 16.1
 Seat Materials: NBR
 Materials: Brass & 316SS

Common Applications

Medical Devices
 Analytical / Biopharma
 Diagnostic Instrumentation
 Inkjet
 Air Filtration
 Conventional Energies
 Renewable Energies
 PET
 Food & Beverage

Oil, Gas & Chemical Industries
 Sanitary
 Water Treatment
 Industrial Cooling
 Car Wash
 Water Management
 Agriculture
 Packaging
 Gas Handling

Electronics
 Textiles
 Molding
 Climate Control
 Printing
 Cold & Hot Glue
 Filling
 Sorting
 On-Board Vehicle


**KIP
Series 1**

Maximum MOPD (psi): 800
Cv: up to 0.305
Power Rating: 6 watts
Ports: 10-32 UNF, 1/8"
Certifications CSA & UL


**KIP
Series 2**

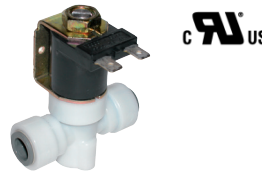
Maximum MOPD (psi): 1000
Cv: up to 0.305
Power Rating: 7 watts
Ports: 10-32 UNF, 1/8"
Certifications CSA & UL


**KIP
Series 3**

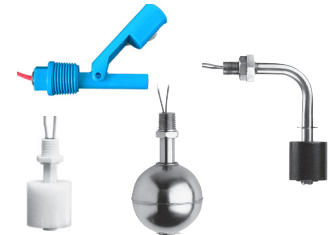
Maximum MOPD (psi): 1000
Cv: up to 0.490
Power Rating: 7 watts
Ports: 10-32 UNF, 1/8", 1/4"
Certifications CSA & UL


**KIP
Series 6**

Maximum MOPD (psi): 1200
Cv: up to 0.610
Power Rating: 10 watts
Ports: 10-32 UNF, 1/8", 1/4", 3/8"
Certifications CSA & UL


**KIP
Q2**

Maximum MOPD (psi): 120
Cv: up to 1
Power Rating: 10 watts
Port: 1/4" PIF & 3/8" PIF
Certifications CSA, UL & NSF


**KIP
Liquid Level**

LS 1, 25 BN, 35SS, LS 11 & 50 SS
Temperature: -40 to 300F
Pressure: up to 750PSI
Min Liquid SP GR: 0.50, 0.65, 0.72, 0.80 & 0.90
Float Materials: Polypropylene, Buna N & 316 SS
Certifications: NSF, UL & CSA


Energy

Inline, Manifold & NAMUR
Port: 1/8" up to 1-1/2"
Function: 2/2, 3/2, 5/2, 5/3
Materials: Stainless Steel, Brass & AL
Certifications: CSA, FM, UL, SIL & Tuv


Miniature Solenoids

Inline, Manifold & Proportional
Body Width: 8mm, 10mm, 15mm, 22mm & 32mm
Function: 2/2, 3/2
Power: 0.5 watts up to 10 watts


Directional Control

Inline, Manifold, Proportional, Manual & Mechanical
Port: 1/8" up to 2"
Function: 2/2, 3/2 2x3/2 & 4/2, 5/2 & 5/3
Cv: .01 to 49.5
Voltage: 12 VDC, 24 VDC, 110/120 VAC, 220 VAC

Common Applications

Cleaning Systems for Pipes

Coffee Machines
Dosing Equipment
Food Steamers
NAMUR interface valves
Redundant Valve Systems
Explosion Proof/Flame Proof Valves
Process Controls

Compressors

Condensate Separating
Conveyors
Flame Cutting Machines
Grinding Machines
Sand Blasting Equipment
Tube Foil Extruders
Molding Presses

Control of Bio-Gas

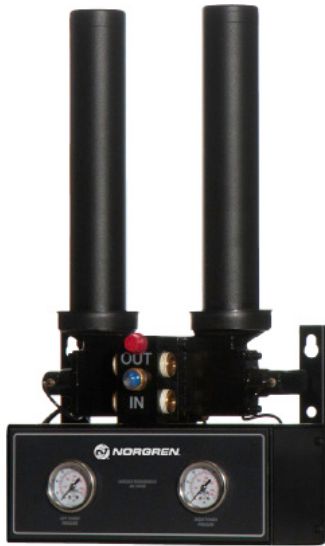
Gas Injections
Mixing Turbines
Dust Filter Cleaning
Steam Control
Dosing of fertilizers
Milking Machines
Printing Machines
CNG & LNG applications


D11 Series

Refrigerated Compressed
 Flow: 10 scfm - 200 scfm
 Compressor: 1/6 HP - 1 HP
 Refrigerant: R134a, R404a
 Pressure Dew Point: 35°F to 42°F


D10 Series

Air Cooled Refrigerated
 Flow: 250 scfm - 7,500 scfm
 Compressor: 1 3/4 HP - 6 HP
 Refrigerant: R404a
 Pressure Dew Point: 38°F


D50 Series

Compact Heatless Regenerative
 Flow: 10 scfm - 50 scfm
 Desiccant: Activated Alumina
 Pressure Dew Point: -40°F Ultra-Dry Air


F21 / F61 Filters

High Flow Mainline Filter
 Flow: 625 scfm - 10,000 scfm
 Ports: 2.5" - 3" NPT, 4" - 8" Flanged
 Filter: 1.0μ Particle / 0.1μ Oil / Vapor



D51 Series

Heatless Regenerative
Flow: 25 scfm - 6,250 scfm
Desiccant: Activated Alumina
Pressure Dew Point: -40°F Ultra-Dry Air



D60 Series

Externally Heated Regenerative
Flow: 100 scfm - 6,250 scfm
Heater: 1kW - 50kW
Pressure Dew Point: -40°F Ultra-Dry Air



D70 Series

Blower Purge Regenerative
Flow: 250 scfm - 6,250 scfm
Heater: 4kW - 87kW
Pressure Dew Point: -40°F Ultra-Dry Air

Common Applications

Laboratory Applications
Temperature Controlled Test Chambers
Medical Equipment & Instruments

Clean Room Applications
Precision Instrumentation

Painting Applications
Auto Body & Powder Coating

Plant Air Applications
Air Powered Tools & Instruments

CONTACT
QUALITY CONTROL PRODUCTS LLC
504-392-9464 www.qcp-lc.com
sales@qcp-llc.com



CONTACT
QUALITY CONROL PRODUCTS
504-392-9464 sales@qcp-llc.com
www.qcp-llc.com

