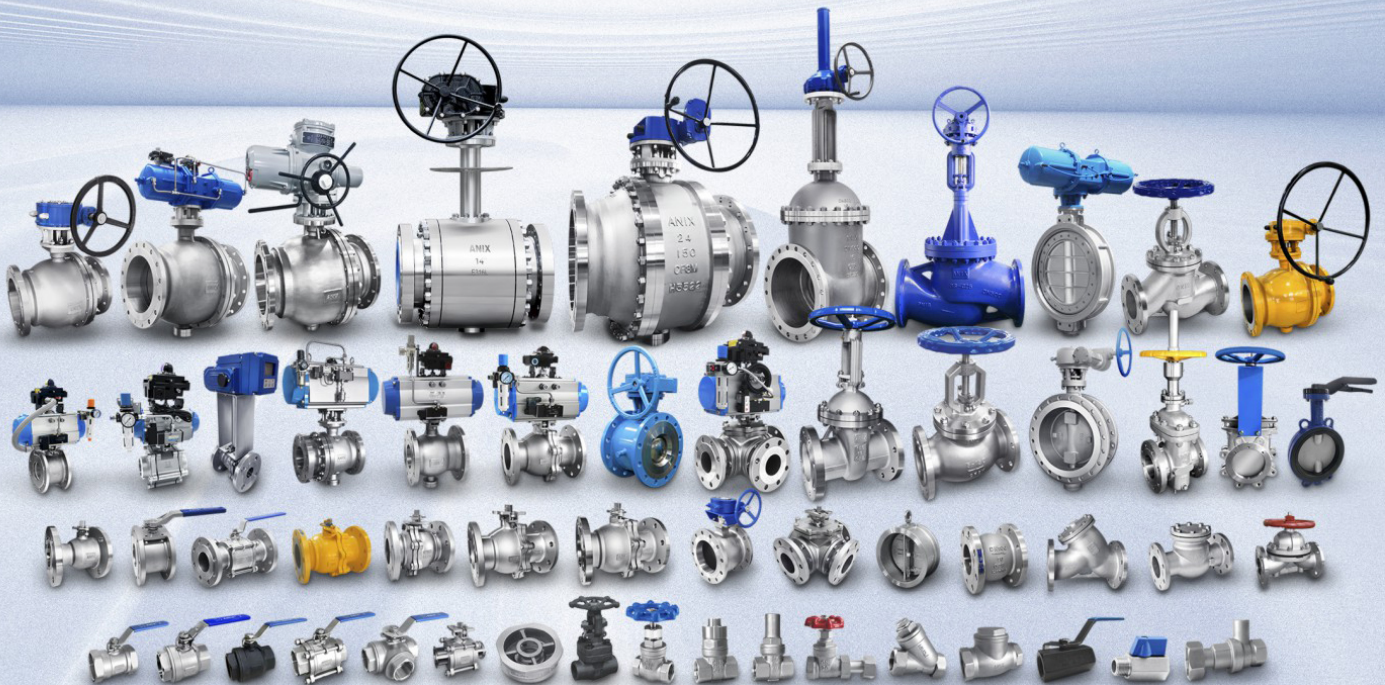




ANIX[®]



Product Line Card
ANIX VALVE USA

sales@qcp-llc.com
504-392-9464

<2025>



ANSI JIS DIN Flanged Ball Valve

Ball Valve(Fire Safe)
(CF8, CF8M, WCB, Ti, Ni)
ANSI-1/2"~12"/ 150LB
JIS-DN15~300/10K~20K
FBV42R6F/150



ANSI JIS DIN Flanged Ball Valve

Ball Valve(Fire Safe)
(CF8, CF8M, WCB, Ti, Ni)
1/2"~8"/ 300LB~600LB
FBV42R6F/300~600



ANSI JIS DIN Flanged Floating Ball Valve(Fire Safe)

(F304,F316)
ANSI-1/2"~8"/150~2500
DIN-DN15~200/PN16~320
FBV42R6F/150~2500



ANSI JIS DIN Flanged Trunnion Ball Valve (Fire Safe)

(F304, F316)
ANSI-2"~24"/ 150~2500
DIN-DN50~600/PN16~320
FBV347R6F/150~2500



Flanged Trunnion Mounted Ball Valve

(CF8, CF8M, WCB, Ti, Ni)
ANSI-2"~24"/ 150LB~300LB
JIS-DN50~600/10K~20K
DIN-DN50~600/PN16~63
FBV347R6F/150~300



ANSI JIS DIN Flanged Gearbox

Ball Valve(Fire Safe)
(CF8, CF8M, WCB, Ti, Ni)
6"~12"/ 150LB/10K/PN16
FBV342R6F/150



Pneumatic Flanged Ball Valve

(CF8, CF8M, WCB, Ti, Ni)
ANSI- 1/2"-40/ 150LB~600LB
JIS-DN15~1000/10K~20K
DIN,DN15~1000/PN16~63
FBV6347R6F/150



Metal Seat (trunnion) Flanged Ball Valve

(CF8,CF8M,WCB,Ti,Ni)
ANSI- 1/2"-40/150~600LB
JIS-DN 15~1000/10K~20K
DIN,BS-DN 15~1000/PN16~63
FBV347Y6F/150~300



Cryogenic Valve

(CF8,CF8M,WCB,Ti,Ni)
ANSI-2"~24/300LB~900LB
JIS-DN50~600/20K
DIN-DN50~600/PN16~150



3-Way Flanged Ball Valve

(CF8, CF8M, WCB, Ti, Ni)
ANSI-1/2"-4"/ 150LB~300LB
JIS-DN15~100/10K~20K
DIN-DN15~100/PN16~40
L: BVH44R6F/150 T: BVH45R6F/150



ANSI, JIS, DIN, GB Flanged Gate Valve

(CF8, CF8M)
ANSI-1/2"-40"/ 150LB~600LB
JIS-DN15~1000/10K~20K
DIN-DN15~1000/PN16~63
GA40W6F/150



ANSI, JIS, DIN, GB Flanged Gate Valve

(WCB)
ANSI- 1/2"-20"/ 150LB~600LB
JIS-DN40~1000/10K~20K
DIN-DN40~1000/PN16~63
GA40H5F/150



ANSI, JIS, DIN, GB Flanged Gate Valve With Gearbox

(CF8,CF8M,WCB)
ANSI- 4"~40/150LB~600LB
JIS-DN100~1000/10K~20K
DIN/DN100~1000/PN16~63
GA540W6F/150



ANSI, JIS, DIN, GB Flanged Gate Valve With Electric Actuators

(CF8,CF8M,WCB)
ANSI-1 1/2"~40/150LB~600LB
JIS-DN40~1000/10K~20K
DIN/DN40~1000/PN16~63
GA940W6F/150



ANSI, JIS, DIN, GB Flanged Globe Valve

(CF8, CF8M)
ANSI- 1/2"-20"/ 150LB~ 600LB
JIS-DN15~500/10K~20K
DIN-DN15~500/PN16~63
GL41W6F/150



ANSI, JIS, DIN, GB Flanged Globe Valve

(WCB)
ANSI- 1/2"-20"/ 150LB~600LB
JIS-DN15~500/10K~20K
DIN-DN15~500/PN16~63
GL41H5F/150



ANSI, JIS, DIN, GB Flanged Check Valve

(CF8, CF8M)
ANSI- 1/2"-20"/ 150LB~600LB
JIS-DN15~500/10K~20K
DIN-DN15~500/PN16~63
CV44W6F/150



ANSI, JIS, DIN, GB Flanged Check Valve

(WCB)
ANSI- 1/2"-20"/ 150LB~600LB
JIS-DN15~500/10K~20K
DIN-DN15~500/PN16~63
CV44W6F/150



ANSI, JIS, DIN, GB Flanged Strainers

(CF8, CF8M)
ANSI- 1/2"-28"/ 150LB~ 300LB
JIS-DN15~700/10K~20K
DIN-DN15~7500/PN16~40
YS41W6F/150



ANSI, JIS, DIN, GB Flanged Strainers

(WCB)
ANSI- 1/2"-28"/ 150LB~ 300LB
JIS-DN15~700/10K~20K
DIN-DN15~700/PN16~40
YS41W6F/150

**2PC Type Ball Valve Threated**

(CF8, CF8M, Ti, Ni, LCC, LF2)
1/4"-4" / 1000PSI
BV12R6N/1000

2PC Type Ball Valve Threated

(CF8, CF8M, WCB, Ti, Ni, LCC, LF2)
1/4"-4" / 2000PSI
BV12R6N/2000

**2PC Type Ball Valve Threated Fire Safe**

(CF8, CF8M, WCB, Ti, Ni, LCC, LF2)
1/4"-4" / 2000PSI
FBV12R6N/2000

2PC Type Ball Valve Threated

(CF8, CF8M, WCB, Ti, Ni, LCC, LF2)
1/4"-2" / 3000PSI
FBV12R6N/3000

1PC Type Ball Valve Threated

(CF8, CF8M, WCB)
1/4"-4" / 1000PSI
BV11R6N/1000

**3PC Type Ball Valve Threated**

(CF8, CF8M)
1/4"-4" / 1000PSI
BV13R6N/1000

3PC Type Ball Valve (Socket Weld)

(CF8, CF8M, WCB)
1/4"-4" / 1000PSI
BV63R6S/1000

3PC Type Ball Valve (Butt Weld)

(CF8, CF8M, WCB)
1/4"-4" / 1000PSI
BV63R6B/1000

3PC Type Ball Valve Threated With Oval Handle

(CF8, CF8M, WCB)
1/4"-4" / 1000PSI
OH-BV13R6N/1000

3PC Type Ball Valve Threated Direct Mount

(CF8, CF8M, WCB, Ti, Ni, LCC, LF2)
1/4"-4" / 2000PSI
FBVH13R6N/2000

**3 Way Ball Valve**

(CF8, CF8M, WCB)
DN15-300 / PN40
L: BV14R6N/1000
T: BV15R6N/1000

3 Way Ball Valve

(CF8, CF8M, WCB)
1/4"-4" / 1000PSI
L: BVH14R6N/1000
T: BVH15R6N/1000

2PC Type Ball Valve Threated

(WCB)
1/4"-4" / 1000PSI
BV12R5N/1000

2PC Type Ball Valve Threated With Deadman Handle

(CF8, CF8M, Ti, Ni, LCC, LF2)
1/4"-4" / 1000PSI
BVH12R6N/1000

Wafer Type Double Disc Spring Check Valve

(CF8, CF8M, WCB)
DN40-700 / 150LB
CV76W6W/150

**Wafer Type Spring Check Valve**

(CF8, CF8M, WCB)
DN15-300 / PN40
CV71W6W/40

3PC Type Spring Check Valve Threated

(CF8, CF8M)
1/4"-2" / PN40
CV13W6N/40

2PC Type Spring Check Valve Threated

(CF8, CF8M)
1/4"-2" / PN40
CV12W6N/40

Swing Check Valve

(CF8, CF8M, WCB)
1/2"-3" / 200PSI
CV14W6N/200

Y-type Female Strainer

(CF8, CF8M, WCB)
1/4"-4" / 800PSI
YS11F6N/800



3PC Clamped-package Ball Valve

(CF8, CF8M, WCB)
1/2"-4" / 1000PSI
BV83R6C/1000



Sanitary Thread Butterfly Valve

(CF8,CF8M)
1"-4" / DN25-DN102
ISO,DIN,IDF,3A,SMS

Sanitary Weld Butterfly Valve

(CF8,CF8M)
3/4"-6" / DN20-DN159
ISO,DIN,IDF,3A,SMS

Sanitary Quick-Install Butterfly Valve

(CF8,CF8M)
3/4"-6" / DN20-DN159
ISO,DIN,IDF,3A,SMS

Sanitary Diaphragm Valve

(CF8,CF8M)
1/2"-2" / DN15-DN50
ISO,DIN,IDF,3A,SMS

Hosetail/Hose barb/Kings nipple

(CF8,CF8M)
1/2"-4"/150LB
ANHT/6N



Camlock A

(CF8, CF8M)
CTA/6
SIZE: 1/2"-6"
/ DN15~150

Camlock B

(CF8, CF8M)
CTB/6
SIZE: 1/2"-6"
/ DN15~150

Camlock C

(CF8, CF8M)
CTC/6
SIZE: 1/2"-6"
/ DN15~150

Camlock D

(CF8, CF8M)
CTD/6
SIZE: 1/2"-6"
/ DN15~150

Camlock E

(CF8, CF8M)
CTE/6
SIZE: 1/2"-6"
/ DN15~150

Camlock F

(CF8, CF8M)
CTF/6
SIZE: 1/2"-6"
/ DN15~150

Camlock DC

(CF8, CF8M)
CTDC/6
SIZE: 1/2"-6"
/ DN15~150

Camlock DP

(CF8, CF8M)
CTDP/6
SIZE: 1/2"-6"
/ DN15~150



ANSI Standard Forged Steel Gate Valve

(A105, F304, F316)
1/2"-2" / 150LB~2500LB
GA11W6N/150

ANSI Standard Forged Steel Globe Valve

(A105, F304, F316)
1/2"-2" / 150LB ~ 1500LB
GL41W6F/150



ANSI Standard Forged Steel Globe Valve

(A105, F304, F316)
1/2"-2" / 150LB ~2500LB
GL11W6N/150

ANSI Standard Forged Steel Gate Valve

(A105, F304, F316)
1/2"-2" / 150LB ~ 1500LB
GA40W6F/150



ANSI Standard Forged Check Valve

(A105, F304, F316)
1/2"-2" / 150LB ~ 1500LB
CV41W6F/150



ANSI Standard Forged Check Valve

(A105, F304, F316)
1/2"-2" / 150LB ~ 2500LB
CV11W6N/150



Stainless Steel Gate Valve Threaded

(CF8, CF8M, WCB)
1/2"-4" / 200PSI
GA11W6N/200

Stainless Steel Gate Valve Threaded

(CF8, CF8M, WCB)
1/4"-3" / 200PSI
GL11W6N/200



Wafer/Lug Butterfly Valve

(CF8, CF8M)
ANSI-2" ~ 48"/150LB
JIS-DN50~1200/10K
DIN,DN50~1200/PN16

Wafer/Lug Butterfly Valve

(Ductile Iron)
ANSI-2" ~ 48"/150LB
JIS-DN50~1200/10K
DIN,DN50~1200/PN16



Wafer Butterfly Valve (metal Seat, Soft Seat)

(CF8, CF8M)
ANSI-2" ~ 48"/150LB~600LB
JIS-DN50~1200/10K~20K
DIN,B5-DN50~1200/PN16~63



Flange, Butterfly Valve (metal Seat, Soft Seat)

(CF8, CF8M)
ANSI-2" ~ 48"/150LB~600LB
JIS-DN50~1200/10K~20K
DIN,B5-DN50~1200/PN16~63



Pneumatic Flanged Ball Valve



Pneumatic Flanged Ball Valve



Pneumatic Flanged Ball Valve



Pneumatic Thread Ball Valve



Pneumatic Flanged Ball Valve



Pneumatic Flanged Ball Valve



Electric Flanged Ball Valve



Electric Flanged Ball Valve



Electric Flanged Ball Valve



Electric Thread Ball Valve



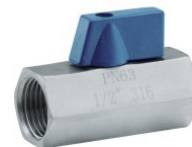
Wafer Type Flanged Ball Valve



Bellow Sealed Globe Valve



MINI Ball Valve M/F



MINI Ball Valve F/F



MINI Ball Valve M/M

(CF8, CF8M)
1/2" ~ 8"/PN16
BV41R6F/16

(CF8, CF8M, WCB)
ANSI-1/2" ~ 16"/150LB~300LB
JIS-DN15~1200/10K~20K
DIN-DN15~1200/PN16~63

(304, 316)
1/4" ~ 1" / 1000PSI
BV30F6N/1000

(304, 316)
1/4" ~ 1" / 1000PSI
BV10F6N/1000

(304, 316)
1/4" ~ 1" / 1000PSI
BV20F6N/1000



Pneumatic Threaded Angle Seat Valve



Pneumatic Flange Angle Seat Valve



Thread Butterfly Valve



Pneumatic Diaphragm Valve



Manual Diaphragm Valve

(CF8, CF8M)
1/2" ~ 3"/PN16~25

(CF8, CF8M)
1/2" ~ 3"/PN16~25

(CF8, CF8M)
3/4" ~ 4"/3A,SMS,ISO

(CF8, CF8M)
1/2" ~ 2"/PN16

(CF8, CF8M)
1/2" ~ 2"/PN16





PLEASE CONTACT US: