



TEL-TRU MANUFACTURING COMPANY

REMO-TEL™ INDUSTRIAL TEMPERATURE MONITORING SYSTEM

The Remo-Tel Industrial wirelessly automates the monitoring and data collection of your industrial process. The real-time data monitoring and temperature alert system, saves time and money with improved efficiency.

Data Driven Decisions = Processing Precision.

► FEATURES:

- Automated temperature data logging for system monitoring and process efficiency
- Real-time automated call, text, and/or email alerts inform you of abnormal temperature conditions, so that your product can be stored at optimal temperatures
- View temperature log with online dashboard and download reports for your records
- Digital sensor for maximum precision, $\pm 0.4^\circ\text{F}$ accuracy
- Cellular based system requires no network connection, helping to minimize cyber risks and downtime
- Built-in battery backup sends alert when power is lost and continues to operate for up to 48 hours afterwards
- Users may view or download data remotely from any internet-connected device using the Remo-Tel user interface
- Fast and easy installation - no complicated software package to install
- Enables you to monitor anywhere where cellular coverage is present

► SPECIFICATIONS:

Environmental

Probe Operating Temp. Range: -67°F to 302°F (-55°C to 150°C)

Mechanical

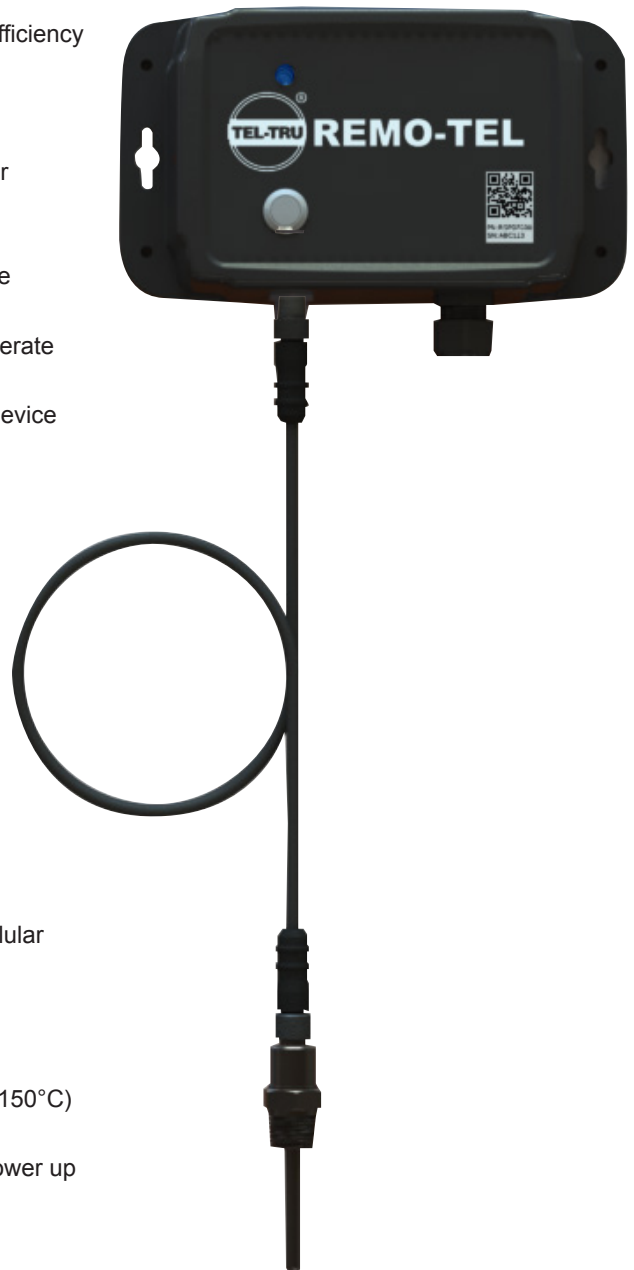
Flexible Cable: 3' or 6' (1 or 2 meter)
 Probe length: 2.5", 4", 6", 8", 9", 12"
 Probe material: Stainless steel
 Process Connection: $\frac{1}{2}$ " NPT or Plain (no threads), others on request
 Housing: Polycarbonate
 Warranty: One year limited warranty, 90 day return policy if cellular connection proves unreliable

Electrical

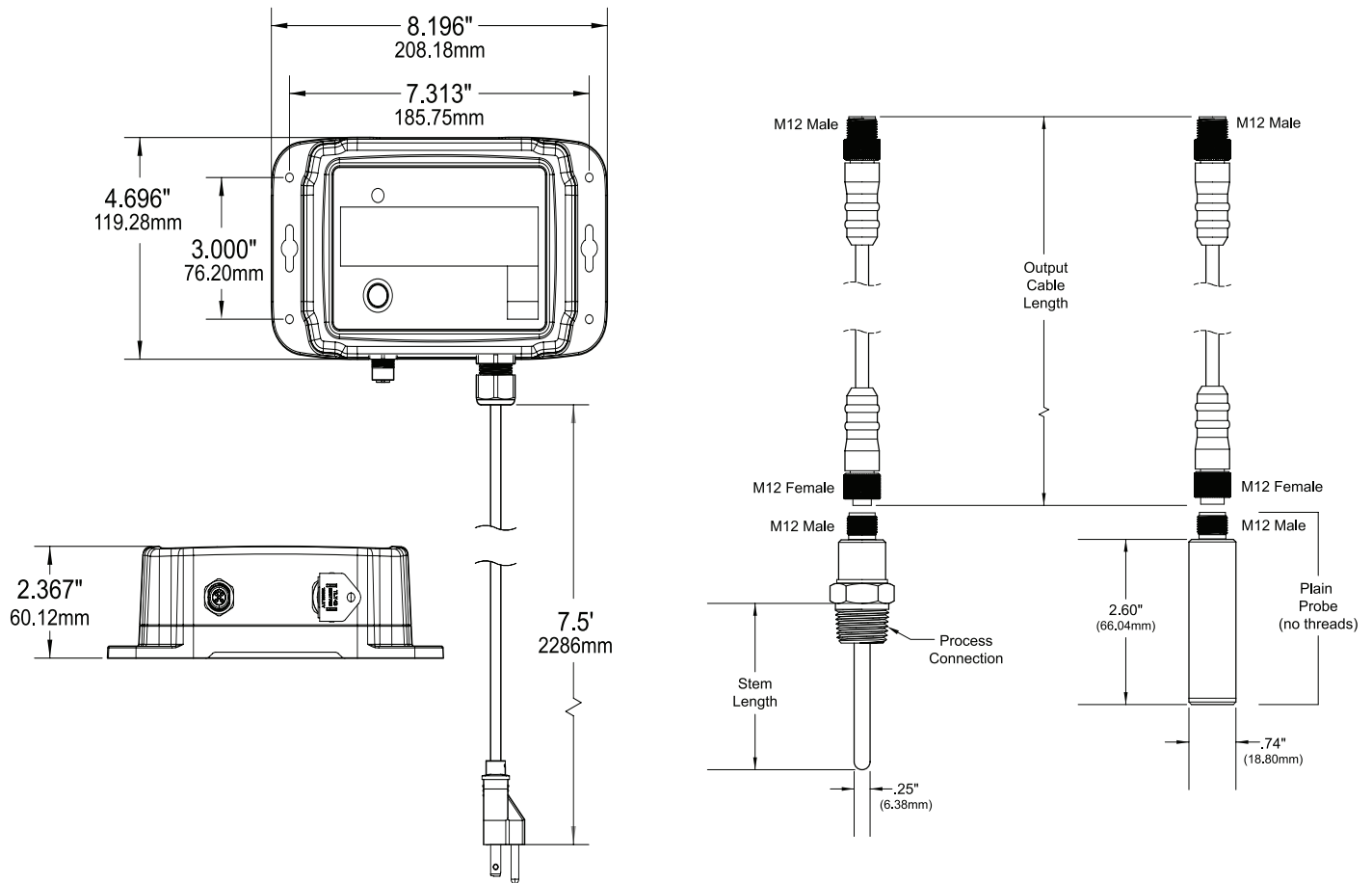
Sensor: High-precision digital temperature sensor
 Accuracy: $\pm 0.4^\circ\text{F}/^\circ\text{C}$ (maximum) from -67°F to 302°F (-55°C to 150°C)
 Power: 120-240 VAC Plug-in power supply
 Back up Battery: Operates device for up to 48 hours, recharges on power up

► INCLUDED WITH PURCHASE:

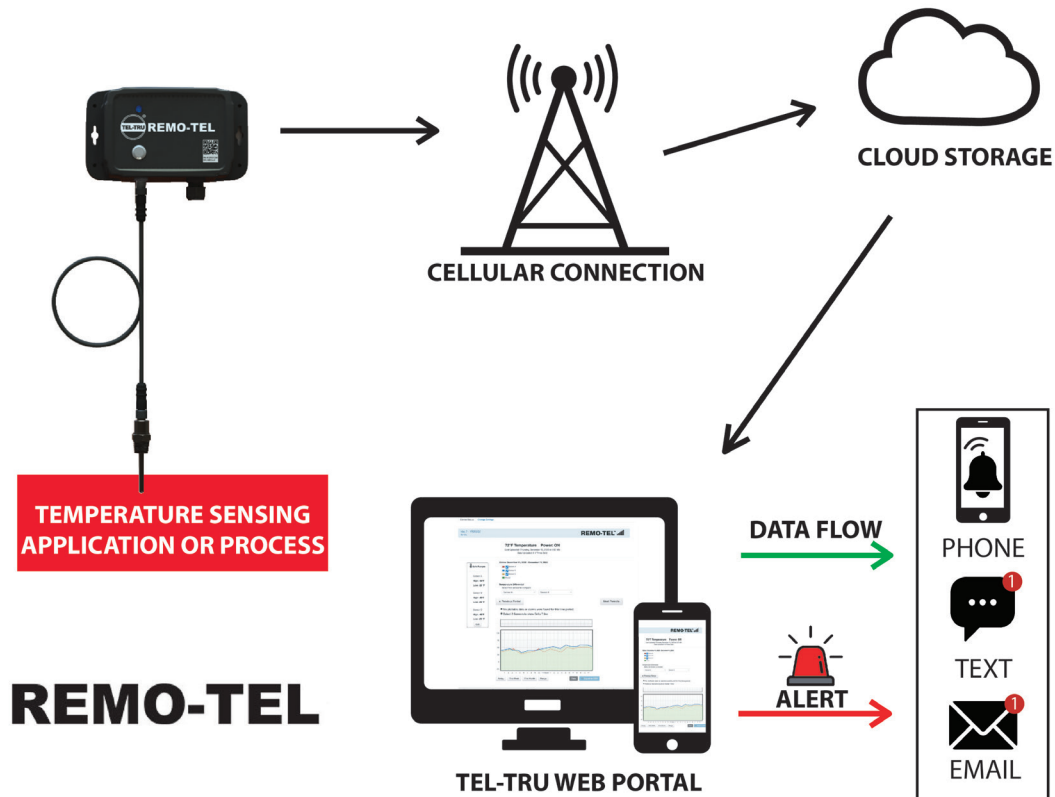
- Remo-Tel unit
- Configurable Probe - Ordered as a package or separately



► DIMENSIONS:



► HOW IT WORKS:





TEL-TRU MANUFACTURING COMPANY



REMO-TEL™ COMPOST TEMPERATURE MONITORING SYSTEM

The Remo-Tel Compost wirelessly automates the monitoring and data collection of your composting process. The real-time data monitoring and temperature alerts system saves time and money with improved efficiency.

Data Driven Decisions = Processing Precision

► FEATURES:

- Automated temperature data logging for efficiency and compliance
- Real-time automated call, text, and email alerts inform you of abnormal temperature conditions, significantly reducing the risk of pile combustion or rotting
- View temperature log with online dashboard and download reports for your records
- Digital sensor for maximum precision, ±.4°F accuracy
- CPVC sheath for corrosion protection of stem
- Cellular based system requires no local network connection, helping to minimize cyber risks and downtime
- Built-in battery backup sends alert when power is lost and continues to operate for up to 48 hours afterwards
- Users may view or download data remotely from any internet-connected device using the Remo-Tel user interface
- Fast and easy installation - no complicated software package to install
- Enables you to work anywhere where cellular coverage is present

► SPECIFICATIONS:

Environmental

Probe Operating Temp. Range: -67°F to 302°F (-55°C to 150°C)

Mechanical

Probe length: 49.4" (1254.8mm), 3 sensor
 Probe material: Stainless steel with CPVC external sheath
 Housing: Polypropylene
 Warranty: One year limited warranty, 90 day return policy if cellular connection proves unreliable

Electrical

Sensor: (3) High-precision digital temperature sensors on top (24"), middle (36") and bottom (48") of probe
 Accuracy: ±0.4°F/C (maximum) from -67°F to 302°F (-55°C to 150°C)
 Primary Battery: (2) Rechargeable Lithium Ion with up to 45 days of charge*
 Back up Battery: Operates device for up to 48 hours, recharges on power up

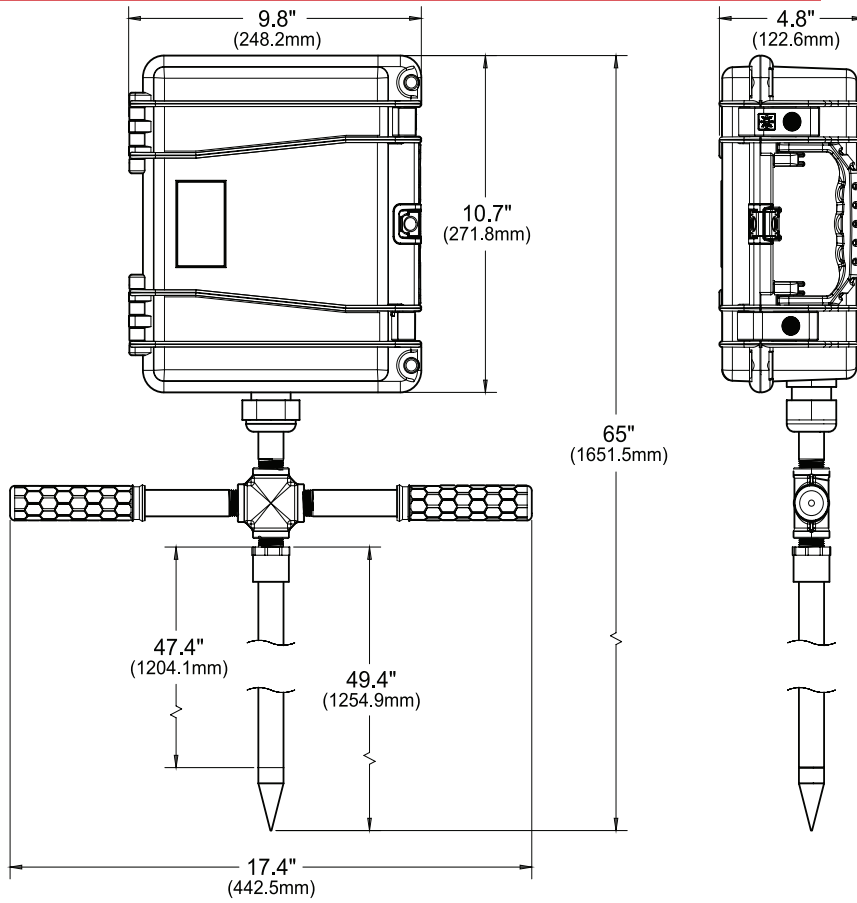
► INCLUDED WITH PURCHASE:

- Remo-Tel unit
- 2 rechargeable batteries
- Charger (110v)
- 2 removable handles

*Battery life is dependent on communication interval and environmental conditions.



► DIMENSIONS:



► HOW IT WORKS:

